

Friction Lock Tuck Top  
Slit Lock Tuck Bottom

STANDARD  
REVERSE TUCK  
(SRT)

The standard reverse tuck has the manufacturer's joint in the right rear corner. The top closure tucks from the rear to the front, and the bottom closure tucks from the front to the rear.

Shown here is a friction lock top closure (easy to open and reclose) and a slit (pie) lock tuck bottom which is more secure and less likely to disengage from product weight. The SRT is effective both as a hand set up and a machine formed carton.

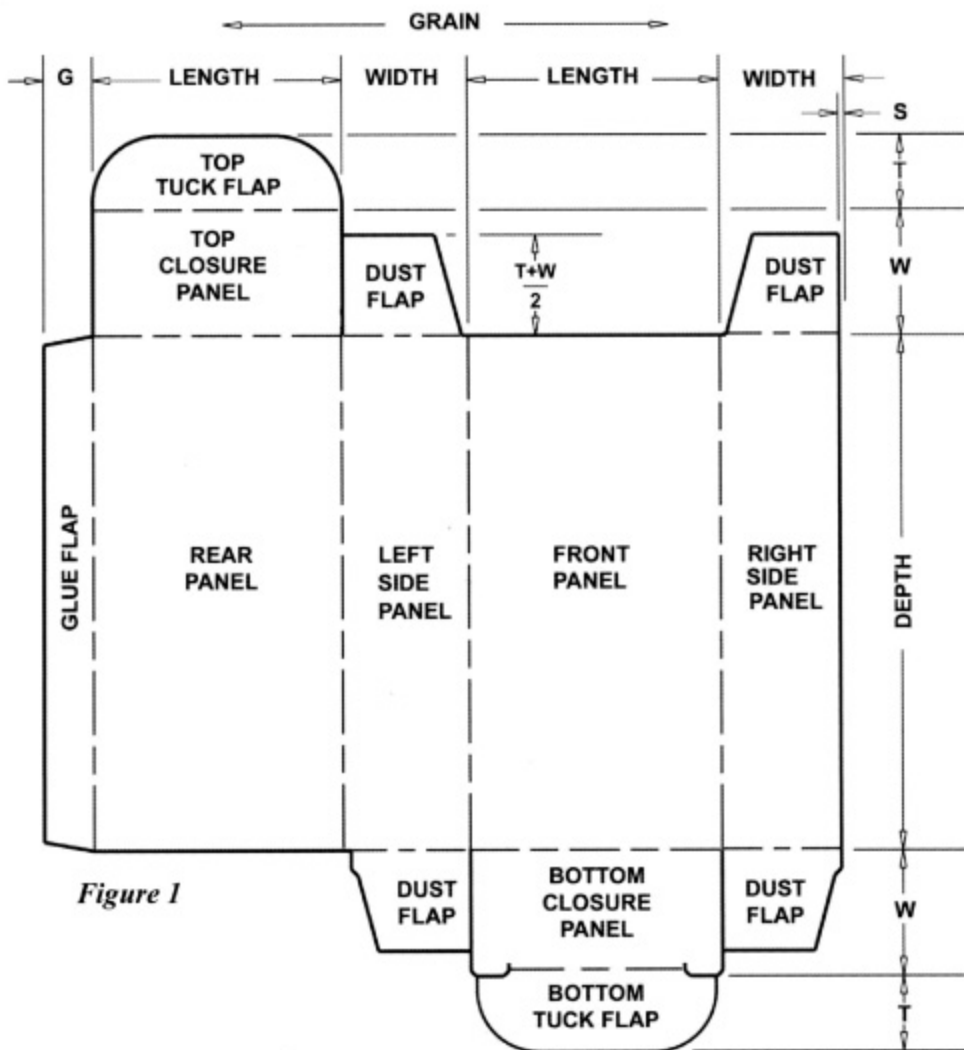


Figure 1

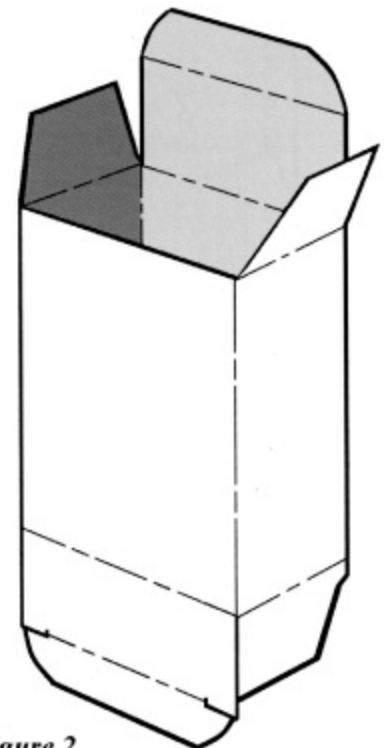


Figure 2