

**Friction Lock Tuck Top Closure**  
**Non-Glued, Interlocked Flap Bottom Closure**

**1-2-3 BOTTOM**  
 (a.k.a) **HOUGHLAND**  
 or  
**SNAP LOCK BOTTOM**

This style originally identified by the inventor's name (Houghland) is today more frequently referred to as the 1-2-3 closure. It is used almost exclusively as a bottom closure, generally in combination with a tuck top closure. This is a hand erected and closed style. In addition to use in the variation shown below, the 1-2-3 closure is frequently used as the bottom closure for a shallow depth tube style counter display carton. The variation illustrated in Figure 2 offers additional security and is the preferred detailing for heavy products.

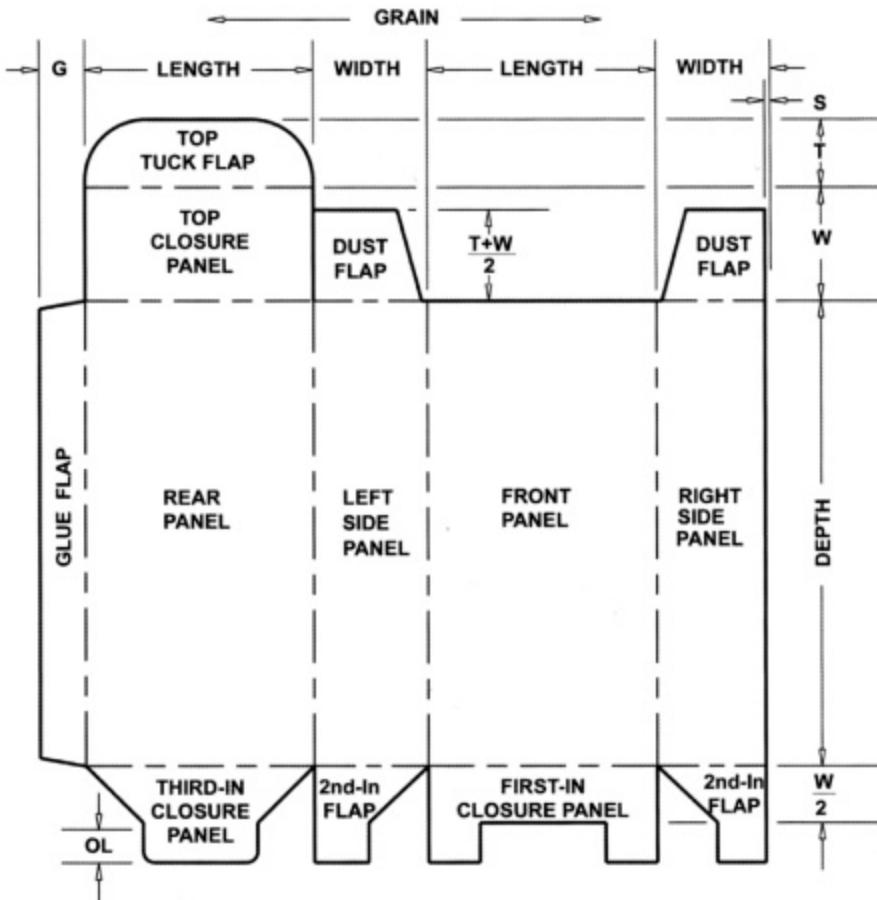


Figure 1

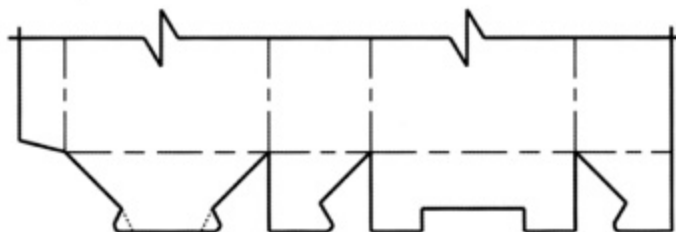


Figure 2

Figure 3—Closing Sequence

