

TUBES WITH COMBINATION END CLOSURES

Slit Lock Tuck Top

Preglued, Auto-Erect Bottom

HIMES LOCK, AUTOMATIC BOTTOM (a.k.a) CRASH LOCK, ECONOMY or POPCORN BOTTOM

The Himes or crash lock automatic bottom is preglued in the converter's plant. It is hand erected and typically used where fast set up is critical, but production volume does not justify an investment in automatic packaging equipment.

Figure 2 shows an alternative detailing of the strip out area for heavy caliper board.

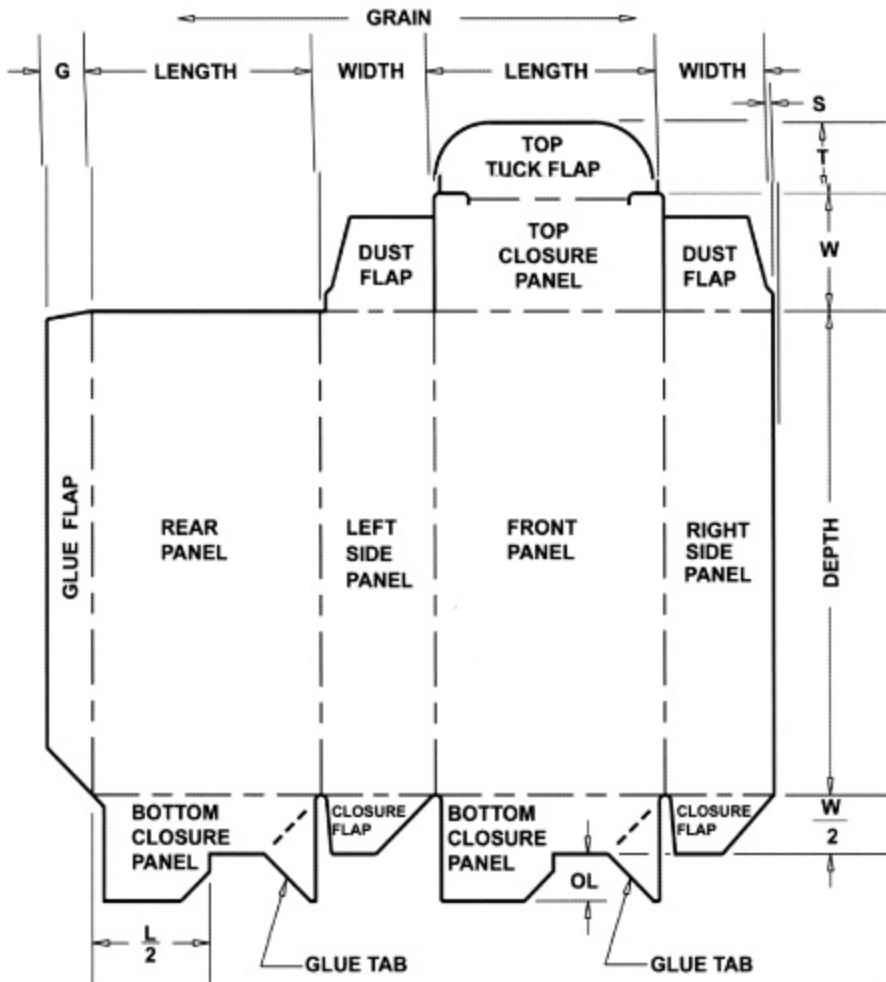


Figure 1

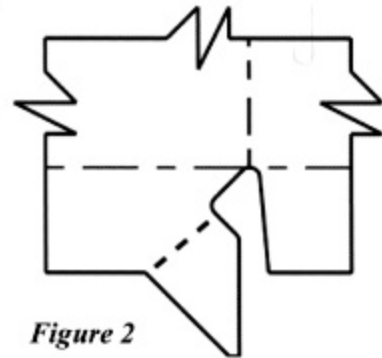


Figure 2

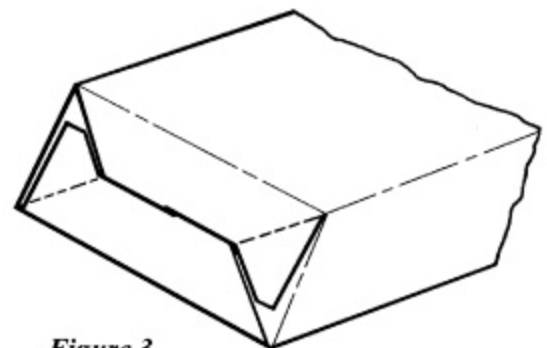


Figure 3