

**FOUR CORNER
BEERS TRAY
(a.k.a.) BIERS TRAY**

The Beers tray is glued by the converter and shipped flat to the customer. It is typically set up and loaded by hand. Figures 1 and 3 show the conventional Beers. Figure 2 shows the “stay-up” or “full drag” version. Combination of a side panel diagonal angle of less than 45° ($43\text{-}1/2^\circ$ typically) and a non-tapered glue flap causes the glue flap to “drag” across the bottom panel. Natural friction causes the carton to resist collapsing once erected.

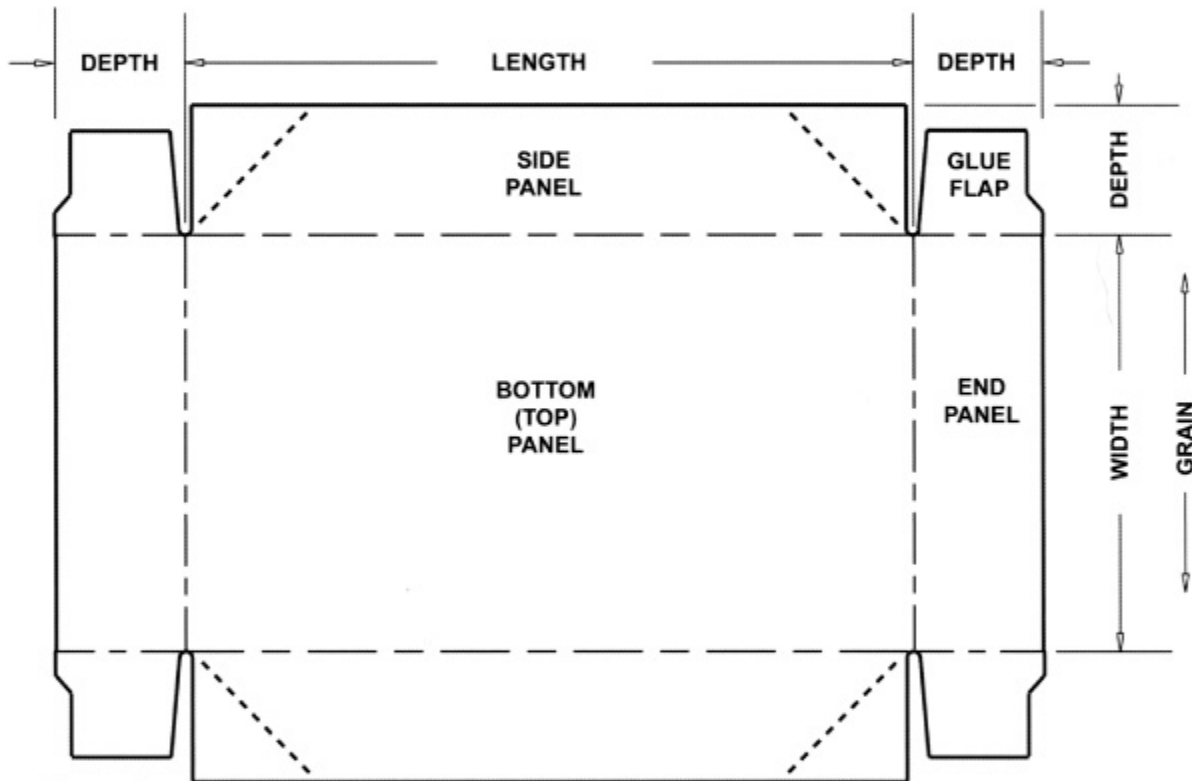


Figure 1

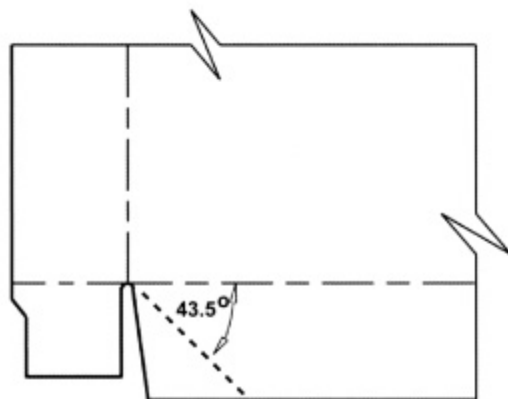


Figure 2

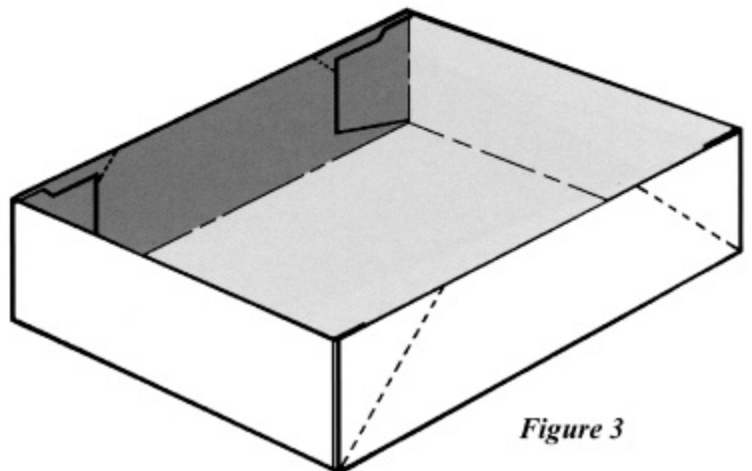


Figure 3