

**TRAY STYLE CARTONS**  
**Single Sidewall / Single Endwall / Hinged Cover**  
**Converter Glued**

**FOUR CORNER (POINT)  
BEERS with  
TUCK TOP CLOSURE  
(a.k.a.) BIERS**

This style is typically set up, loaded and closed by hand. It is suitable for a broad range of relatively light products.

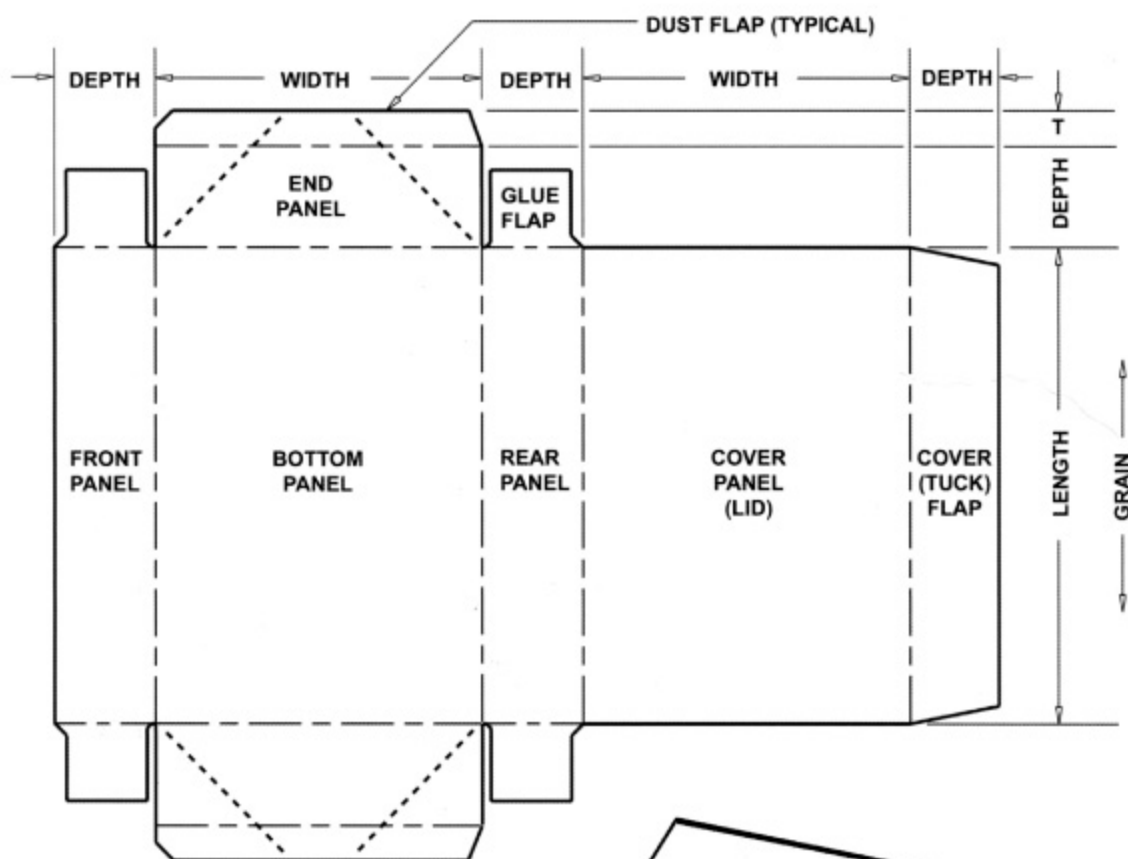


Figure 1

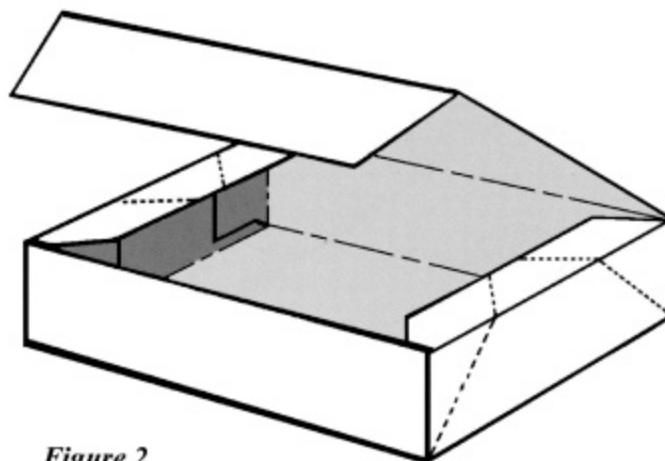


Figure 2